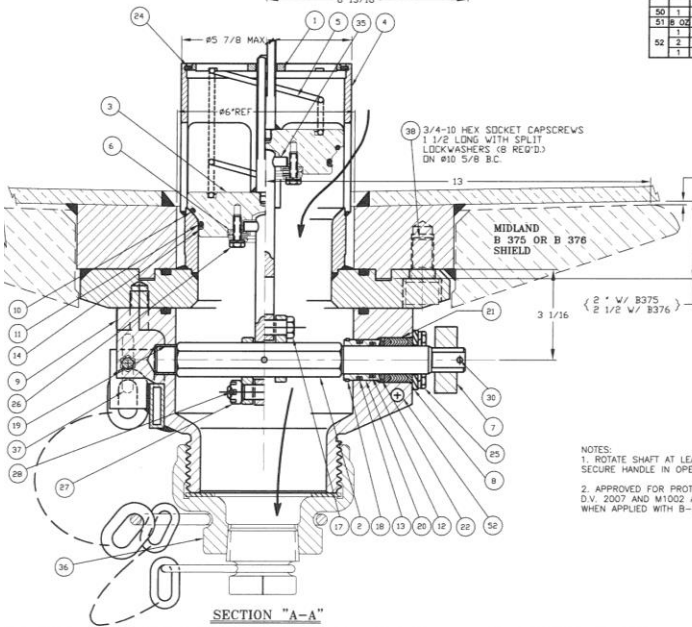
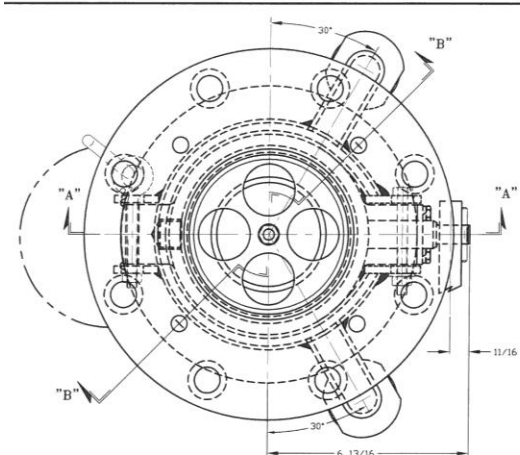
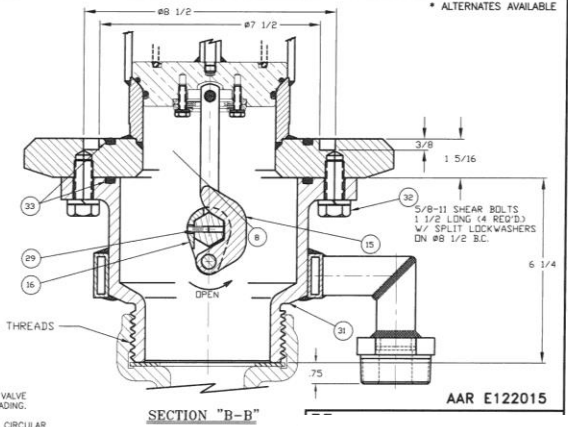


A-548-CS-SJ, A-548-XS-SJ, A-548-SS-SJ, A-548-MO-SJ



ITEM NO.	QTY.	PART NAME	A-548-CS-SJ (STEEL/SS TRM) MATERIAL	A-548-XS-SJ (CS/SS TRM & CAGE) MATERIAL	A-548-SS-SJ (TYPE 304 SS) MATERIAL	A-548-MO-SJ (TYPE 316 SS) MATERIAL
1	1	TOP GUIDE	STEEL	STEEL	STAINLESS STEEL	STAINLESS STEEL
2	1	SHAFT	STAINLESS STEEL	STAINLESS STEEL	STAINLESS STEEL	STAINLESS STEEL
3	1	RETAINER ASSEMBLY	STAINLESS STEEL	STAINLESS STEEL	STAINLESS STEEL	STAINLESS STEEL
4	1	BODY	STEEL/SS SEAT	STEEL/SS SEAT	STAINLESS STEEL	STAINLESS STEEL
5	1	SPRING	STAINLESS STEEL	STAINLESS STEEL	STAINLESS STEEL	STAINLESS STEEL
6	1	RETAINER COVER ASM	STAINLESS STEEL	STAINLESS STEEL	STAINLESS STEEL	STAINLESS STEEL
7	1	HANDLE	STEEL	STEEL	STEEL	STEEL
8	1	PACKING FLANGE	STEEL, PLATED	STEEL, PLATED	STEEL, PLATED	STEEL, PLATED
9	1	FLANGE PIN	STAINLESS STEEL	STAINLESS STEEL	STAINLESS STEEL	STAINLESS STEEL
10	1	SEAT "O" RING	BUNA N *	BUNA N *	BUNA N *	BUNA N *
11	1	BONE "O" RING	BUNA N *	BUNA N *	BUNA N *	BUNA N *
12	1	SHOFT "O" RING	BUNA N *	BUNA N *	BUNA N *	BUNA N *
13	1	BUSHING "O" RING	BUNA N *	BUNA N *	BUNA N *	BUNA N *
14	1	WIPER RING	PIPE	PIPE	PIPE	PIPE
15	1	CAM LEVER	STAINLESS STEEL	STAINLESS STEEL	STAINLESS STEEL	STAINLESS STEEL
16	1	CAM	STAINLESS STEEL	STAINLESS STEEL	STAINLESS STEEL	STAINLESS STEEL
17	1	LAW BOLT	STAINLESS STEEL	STAINLESS STEEL	STAINLESS STEEL	STAINLESS STEEL
18	1	RETAINER RING	STAINLESS STEEL	STAINLESS STEEL	STAINLESS STEEL	STAINLESS STEEL
19	1	SHAFT BUSHING	STAINLESS STEEL	STAINLESS STEEL	STAINLESS STEEL	STAINLESS STEEL
20	1	PACKING BUSHING	STAINLESS STEEL	STAINLESS STEEL	STAINLESS STEEL	STAINLESS STEEL
21	1	PACKING SET	PIPE	PIPE	PIPE	PIPE
22	1	PACKING SPRING	STAINLESS STEEL	STAINLESS STEEL	STAINLESS STEEL	STAINLESS STEEL
23						
24	1	RETAINER RING	STAINLESS STEEL	STAINLESS STEEL	STAINLESS STEEL	STAINLESS STEEL
25	4	PACKING BOLT	STAINLESS STEEL	STAINLESS STEEL	STAINLESS STEEL	STAINLESS STEEL
26	4	PACKING LAW	STAINLESS STEEL	STAINLESS STEEL	STAINLESS STEEL	STAINLESS STEEL
27	4	RETAINER BOLT	STAINLESS STEEL	STAINLESS STEEL	STAINLESS STEEL	STAINLESS STEEL
28	4	RETAINER NUT	STAINLESS STEEL	STAINLESS STEEL	STAINLESS STEEL	STAINLESS STEEL
29	1	CAM STEM NUT	STEEL, PLATED	STEEL, PLATED	STAINLESS STEEL	STAINLESS STEEL
30	1	CAM STEM PIN	STAINLESS STEEL	STAINLESS STEEL	STAINLESS STEEL	STAINLESS STEEL
31	1	HANDLE PIN	STAINLESS STEEL	STAINLESS STEEL	STAINLESS STEEL	STAINLESS STEEL
32	1	BASE	DUCTILE IRON	DUCTILE IRON	STAINLESS STEEL	STAINLESS STEEL
33	4	BASE BOLT	STEEL	STEEL	STEEL	STEEL
34	2	BASE "O" RING	BUNA N *	BUNA N *	BUNA N *	BUNA N *
35	1	PIN	STAINLESS STEEL	STAINLESS STEEL	STAINLESS STEEL	STAINLESS STEEL
36	1	CAM ASSEMBLY	DUCTILE IRON	DUCTILE IRON	STAINLESS STEEL	STAINLESS STEEL
37	1	EYEBOLT, NUT, LW	STEEL	STEEL	STEEL	STEEL
38	8	BODY BOLT	STEEL * PLATED	STEEL * PLATED	STEEL * PLATED	STEEL * PLATED
39	8	LOCK WASHER	STEEL * PLATED	STEEL * PLATED	STEEL * PLATED	STEEL * PLATED
40	1	STEAM JACKET ASM	STEEL	STEEL	STEEL	STEEL
41	8	CS HEAT TRANSFER GROUT	CEMENT	CEMENT	CEMENT	CEMENT
42	1	HEX HEAD CAP SCREW	STEEL	STEEL	STEEL	STEEL
43	2	FLAT WASHER	STEEL	STEEL	STEEL	STEEL
44	1	HEX NUT	STEEL	STEEL	STEEL	STEEL



NOTES:
1. ROTATE SHAFT AT LEAST 150° CCW TO OPEN VALVE. SECURE HANDLE IN OPEN POSITION WHILE UNLOADING.
2. APPROVED FOR PROTECTION LEVEL A OF AAR CIRCULAR D.V. 2007 AND M1002 APPENDIX E, PARAGRAPH 10.1.1 WHEN APPLIED WITH B-375 OR B-376 SHIELD.

AAR E122015